



Logan Artists Association

Newsletter February 2012

General Meetings are held the 1st Saturday of each Month excluding January.
Next meeting is 4 February 10am.

**Art
+
Friendship**

**Logan Artists
Association Inc**
PO Box 378
Browns Plains
QLD 4118

Art & Pottery Studios
27 Coral St Loganlea

ALL ENQUIRIES
Ph 0421 874 225

www.loganartists.com

President

Karin Hill
president@loganartists.com

Vice President

Robyn Pell
newsletter@loganartists.com

Secretary

Vikki Kindermann
secretary@loganartists.com

Acting Treasurer

Robyn Pell
treasurer@loganartists.com

Classes

Robyn Tindale
classes@loganartists.com

Newsletter

Robyn Pell
newsletter@loganartists.com

Patron

Desley Scott MP
State Member
for Woodridge

"A place for all Artists"

President's Message...

Welcome to another year of artistic fun and friendship with LAA. Our year ahead looks exciting with a couple of major developments. Most importantly during 2012, we will see the building of the LAA extension to create a permanent gallery space to display work created by members in the LAA Art and Pottery studios. Plans are well underway with work proposed to start in March 2012 with completion in June/July 2012. We hope to celebrate this wonderful new extension with the LAA annual exhibition. Thank you to all the members who suggested themes for the 2012 Annual Exhibition. We will have a member's vote on these themes during the February meeting, so members can start to work on their exhibition artwork.

We are very grateful to all the work that Ray has put in during the summer months to coordinate and implement the construction of a new kiln. We will have a special LAA Raku firing day to celebrate the first firing of this new kiln. Details will be announced at the members meeting in February.

Regular classes and special events start again in February. I want to extend a very sincere thank you to Rob Tindale who has been the LAA Workshop Coordinator for several years. Rob currently has a number of health issues which need to take priority for a while so she has stepped down from this role. I know that regular class attendees will miss Rob's cheerful disposition and hearty laugh, and we wish Rob a total and speedy recovery.

As a consequence of Rob stepping down, there will be a number of changes in the way which the regular classes are managed. We are grateful that Di Flack has volunteered to extend her current responsibilities to include general coordination. To help with the weekly classes we are calling for "class assistants". The class assistants will only need to record attendance and accept class fees which will be given to Di for filing and banking purposes. As a thank you to the new helpers, they will be offered LAA workshops and events vouchers regularly through the year. If you attend a class fairly regularly and are interested in assisting, please talk with Di as soon as possible on 33414204.

I look forward to sharing a very exciting 2012 with LAA members and many friends.

Karin

Thought for the month: *"Volunteers are not paid – not because they are worthless, but because they are priceless...unknown"*



It was a feast of Christmas goodies and good will with members and friends enjoying a morning tea together during our final meeting for the year.

Thanks to everyone who brought along the tasteful treats, and to everyone who helped set up and clean up.





From the Pottery Studio

Greetings All,

Well the New Year has arrived being heralded in with some hot and wet weather. I'm sure by the time classes, social activities & workshops start again on Monday the 6th of February we will all be ready to take up the tools & inspiration.

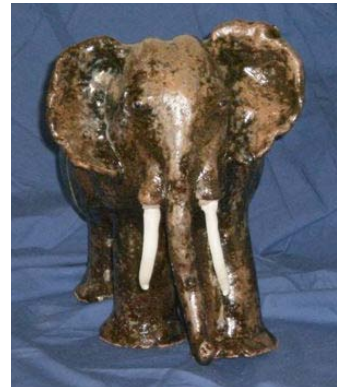
The Good news is that the L.A.A. R1 Kiln is finished and the inaugural firing should take place early in February. So the Kiln Gods will have to be made prior to that date. Am very happy with the finished outcome of the kiln, and a few thanks are in order. Firstly I would personally like to thank John of GENENG for the cutting and welding of the frame, a very generous and well executed job. Also many components were donated in the past, and the most gratifying element is that the project has come in on budget.

I would like to thank Nick for being the "other hand" & holding many nuts & bolts during the Kilns construction. Another gratifying element of this Kiln is that it should be able to accommodate the various expressive pottery forms of firing such as Saggar, Luster, Pit style, post reduced Earthenware & Raku types of firings.



So looking forward, we should have many good times & favorable outcomes with the new equipment, and many enjoyable social "Raku" days.

In the last newsletter I eluded to "Elephants in the Room", well here are the photos, we are not quite sure just what type of elephants they are, perhaps even a mammoth, but all nicely made and a excursion into the realms of animal sculpture.



Just a reminder that we hope to run a night class this year, Monday night 6pm to 9pm is the preferred format, so if you know anyone who is interested in joining us then please encourage them to do so, the same applies for the day classes.

In conclusion, I am looking forward to a very expressive & constructive year ahead in the Pottery Studio; we have much to do and plenty of time to do it.

Hope to see you soon.

Ray.



Guest Speaker December 2011

Our Guest speaker for December 2011 was Debaran Wright. Deb is a very successful artist and popular art tutor.

She has been a member of the LAA tutors since 2006 and she enjoys tutoring in wide range of art subjects and art mediums.

Deb is long term tutor for regular Wednesday morning LAA art class in mixed media, and conducts special workshops during the year.

Deb described her enjoyment in working with Ink and invited students to her "Introduction to Ink" workshop on Saturday 10th December. The workshop was very popular and a follow-up workshop "Advanced Ink" workshop is scheduled for 14 April 2012.

Display of People's Choice winning entry

- Ria Willering



Ria is inspired by the body and likes finding different moods and interpretations in figures. She brought into the studio many figure drawings and a small selection of her art journals.



Mayor Pam Parker Visit

Logan Artists were very honoured to have a visit from Mayor Pam Parker during the December meeting. We presented Pam with a lovely handcrafted bowl made by Ray Outeridge in the LAA Pottery Studio.

Pam enjoyed the Christmas morning tea and then spoke to the group about the plans for Logan and the importance of working together to build on our great reputation as a friendly happy city.

Pam distributed Christmas bookmarks and "Pass it on" cards to spread the word about Logan City, the heart of South East Qld.



float



woolloomgabby art gallery

float

featuring
GhostNets Australia & Joannah Underhill

Opening

27 January 6.30pm - 9.30pm

Exhibition Dates

27 January ~ 25 February 2012

Out of adversity comes sheer joy.

Join us in a celebration of creative innovation with GhostNets Australia and Brisbane artist Joannah Underhill.

Ghost nets are lost or abandoned fishing nets, travelling the world's oceans and tides, fishing indiscriminately. GhostNets Australia, Erub Erwer Meta (Darnley Island Arts Centre) and other indigenous arts centres recycle the collected nets into fabulous, colourful baskets and sculptural works.

As a cancer survivor, Joannah's paintings present a blooming and fertile landscape of cellular growth, rejuvenation and healing.

image details:
top © GhostNets Australia
bottom @ Joannah Underhill

Woolloomgabby Art Gallery – 613 Stanley Street Woolloomgabby Q 4102
Wednesday to Saturday 10am – 5pm
Enquiries (07) 3891 5551 – email@wag.com.au – www.wag.com.au



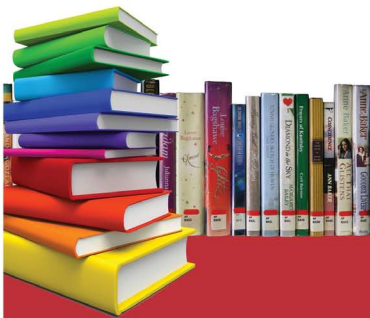
KRANK January 2012

Once we had convinced the children attending the morning class that although we were not going to 'Graffiti' the Studio and that we would still have fun we began the process of producing some rather fun examples of 'Sgraffiti'!

The afternoon resulted in some amazing boxes. The topic for the class was "In and out the box" and the children took this to heart. They worked with gusto and created some totally different boxes. Glue, paint, feathers, sparkles, jewels and ribbons were pasted in and out the boxes and smiling faces took their exclusive creations home.



Community benefit booksale



**Saturday
25 February
9am to 2pm**

Logan Central Library

26 Wilbur Street
Logan Central
Ph: 3412 4100

Proceeds go to:

Logan Artists Association

Nothing priced over \$2.00

Hardcover and Paperback books. Non-Fiction and Fiction - Junior, Young Adult and Adult.

CDs, Magazines and Audio Books

All items are subject to availability



Under new management since 2007

- THE MOST COMPREHENSIVE RANGE of fine art supplies (including Art Spectrum, Chroma, Winsor & Newton, Schmincke, Canson, Staedtler, Artline, Faber-Castell, Micador, Fredrix, Derwent, Conte, Carravaggio, Weber, Caran D'Ache)
- The biggest range of Mont Marte products in Queensland
- A reputation for having the FAIREST PRICES
- A loyalty programme with achievable rewards
- Extra discounts for art educators, artworkers alliance and flying arts members
- Unique ART KITCHEN, a no obligation materials testing area.
- Artist drop-in centre, with artists working in store - FREE
- Regular FREE ART DEMOS
- ART BOOKSHOP in store and online.
- Custom CANVAS STRETCHING service
- Circle Gallery above



274 Montague Road West End, Q 4101
Ph: (07) 3846 1338
Fax: (07) 3846 3338
Email: westend@artshed.com.au

OPEN
7
DAYS

www.artshedbrisbane.com.au

10% Discount for Logan Artists Members

Logan
Libraries



CITY OF OPPORTUNITIES
FOR FAMILIES, LIFESTYLE AND BUSINESS



Free Website Artists Profile

If you are a member and would like your profile on the new LAA website gallery please email Robyn with your details at newsletter@loganartists.com with your interest.

This is free to all LAA members and can be linked to your own website.

Forward Planning For 2012 LAA Calendar

LAA members are invited to submit ideas for special workshops or events for consideration in the LAA 2012 Events Calendar.

Please email your ideas to newsletter@loganartists.com or write them and place in suggestion box at the studio.



Product of the Month from “The Art Shed”

Australian Vaalbarra soapstone. Surface picked not blasted (to minimize fracture lines). Variety of colours. Wonderful for sculptures and jewellery. Pieces up to football sized. \$15 per kg.

Newsletter Articles

Please submit any stories or images you may like to have published. We are always looking for interesting articles or stories about what our members may have done or images of the work they are creating.

Send to newsletter@loganartists.com

For Sale & Wanted (email your ads to newsletter@loganartists.com)

Wanted for the Pottery Studio.

20 or 10 litre plastic buckets with lids. To be used for glazes and materials.

Metal Rubbish bins with lids, it doesn't matter what condition they are in.

Also any old pottery Kiln shelves, white solid bricks (clinkers) for kiln use.

We are also looking for a large glass jar (about 3 to 4 liters).

If you can help out with this request it would be greatly appreciated. Thanks Ray. Ph 0418673404

GOMA Gallery of Modern Art - Brisbane

The Drawing Room

Matisse: Drawing Life | 3 December 2011 – 4 March 2012

Opening Hours 10.00am — 5.00pm Monday to Friday 9.00am — 5.00pm Saturday and Sunday

As a spectacular installation within the 'Matisse: Drawing Life' exhibition, The Drawing Room features an abundance of objects to draw, from still—life arrangements and sculptures to fabrics and furniture, as well as live music and models, to encourage visitors in the creative activity of drawing. Taking a twenty-first—century approach to drawing, visitors can also engage with sketching through a touchscreen interactive tablet.

Purchase a season ticket and return as often as you like to enjoy a series of ongoing programs and events throughout the exhibition period.

“Painting is by nature a luminous language.”

Workshops at LAA

Seascapes Oils Workshop

Workshop with Brian Cook

Working in oils to create a beautiful seascape painting

Modern impressionist style

Cost: \$35 members \$40 non members

Date: Saturday 18 February

Time: 9.30am to 12.30pm

Location: Logan Artists Association Studio, 27 Coral Street, Loganlea.

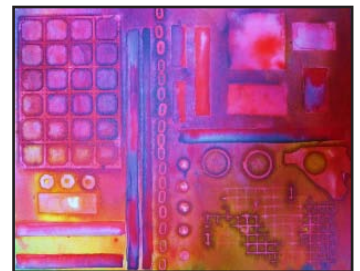
Book with Rob T on 0421 874 225 or Di on 3341 4204



Heliotropic - What The???

Tutor: Debaran Wright

Saturday March 24th come and have fun with a very different vibrant medium. This paint is affected by sunlight! Bring or find objects and create a 'masterpiece'. Participants must bring two canvases (approx. 50x50 cm.) and whatever bits and pieces they would like to work with (these must be able to lie flat). Other objects for possible inclusion will also be available. You do not need to be an artistic genius to enjoy this workshop – open to all levels of capability – so bring a friend!!



Cost: \$35 Members \$40 non members

Date: Saturday 24th March

Time: 9.30 - 12.30

Location: Logan Artists Association Studio, 27 Coral Street, Loganlea.

Please feel free to call me on 0421 409 069 or to contact me at debaran@bigpond.com

Ink Pen and Wash Workshop - a particularly vibrant medium

Module 2 - Tutor: Deb Wright

This workshop is a follow on from the introductory workshop held last year. It is not imperative that you attended the previous program.

It is intended that this workshop focus on ink and washes; working only in ink; working only in black pen; laying down background colour; the use of resistant medium; mixing colours; working with the 'ink wash' concept of 'less is more'; special effects; etc.

There will be a little preparation required – 4 pieces of selected ink drawings will be required to be drawn prior to the workshop. This will reduce the time taken in drawing or copying these drawings. They will be used for 'ink wash'. Copies will be provided 2 weeks prior to the workshop so that you have enough time to use the light box in the studio or use a window pane to copy these onto paper that will be provided or perhaps you would prefer to astound and draw free hand??

Copies of ink drawings will be provided together with suitable paper

Paper and ink will be provided

Please bring at least one medium point permanent black felt pen

Cost: \$35 Members \$40 non members.

Date: Saturday 14th April

Time: 1pm to 4pm

Location: Logan Artists Association Studio, 27 Coral Street, Loganlea.

Please feel free to call me on 0421 409 069 or to contact me at debaran@bigpond.com



Workshops at LAA cont'd

Raku Workshop

Tutor: Ray Outteridge

Workshop with Ray Outteridge covering a short history of the RAKU process, the selection of clays suitable for the rapid firing procedure. Firing and decorating techniques. Reduction and post reduction procedures, the operation of a RAKU R1 top hat kiln. The forming and making of shapes suitable for the process and an explanation of color effects. This is a participation workshop.

Cost: \$35 Members \$40 non members. This workshop is open to all.

Date: Saturday 25th Feb.

Time: 1pm to 4pm

Location: Logan Artists Association Studio, 27 Coral Street, Loganlea.

Book with Ray 0418673404 or Rob T on 0421 874 225



Firing -A further workshop on Raku firing will take place on the 31st March. This will be of six hours duration (10am to 4pm) & will cover all aspects of the firing process. All previously made pieces will be glazed & fired. The kiln will be fired six or seven times during the day.

Costs for the firing day will be Members \$40 & non members \$50. Plus glaze costs (minimal)

Location: Logan Artists Association Studio, 27 Coral Street, Loganlea.

Book with Ray 0418673404 or Rob T on 0421 874 225



Triple Fun Workshop - Polymer Clay

Stained Glass Pendant, Captured Curiosity, Window Heart Pendant

Tutor - Christi Friesen -(Guest International Artist - One off Workshop)

All skill levels welcome! All Supplies Provided For This Workshop!

In this workshop we will create three fun projects! These projects incorporate sculptural techniques, use of mixed media accents and resin. Design and composition, creativity, color mixing, sculptural techniques and incorporating mixed media accents in polymer clay are all areas that we will cover. Don't worry if you've never done anything like this before - the projects are broken down into simple steps. And if you're already an accomplished artist, you'll love exploring how polymer can expand your artistic vision. All materials will be supplied.

For more information and bookings - email: christi@cforiginals.com or phone Robyn on 0417 719 745

Cost: \$70USD This workshop is open to all skill levels.

Bookings only by Christi's website <http://www.cforiginals.net/> follow the links to workshops.

Date: Thursday 15th March **Time:** 2pm to 6pm

Location: Logan Artists Association Studio, 27 Coral Street, Loganlea.



Workshops at LAA cont'd

Shellac, Aluminium + Bitumen Workshop

Tutor: Deb Wright

Working with these 3 products creates magic. The Shellac being alcohol based and the Bitumen being oil based react spectacularly with each other. The addition of Aluminium foil creates the most unusual end results. This workshop investigates new areas of technique and an 'abstract' end result that is totally different to any other medium. The possible inclusion of oil paints allows for different colouring but the reactions are still exciting and varied.



In view of the layering and drying that is needed between layers this workshop will take a full day.

Please bring your own lunch, wear an apron or old clothes and bring 2 Canvases minimum of 30x30cm (please prepare with 2 coats of white gesso)

Aluminium, Bitumen, Oil paints, Shellac, Methylated spirits, Brushes, Turpentine and various spray bottles, etc. will all be provided.

Cost: \$35 members and \$40 non members

Date: Saturday 21st July

Time: 9am to 4pm

Location: Logan Artists Association Studio, 27 Coral Street, Loganlea.

Please feel free to call Deb on 0421 409 069 or to contact me at debaran@bigpond.com



Classes at LAA

Monday Night Pottery Class

An Evening Pottery Class will be conducted at the L.A.A. pottery studio commencing shortly, 6pm to 9pm. At present we have two participants but we require a minimum of seven students to make the class viable. So ask your friends and form a group. As soon as we have seven we will start.

All aspects of Studio Pottery will be undertaken. Cost will be \$25 for members and \$30 for non members. For further information please ring Ray on 0418673404 or 55467398 any time.

Art Class with Deb

Wednesday class is a collective of artists using various mediums. Participants work at their own pace in their chosen medium of water colour, acrylics, drawing or any alternative combination or other medium. It is the intention that tuition is individualised to suit each participant during their art practice. Subject matter varies from total realism to textured abstract. This group is suitable for beginners or advanced artists who wish to experiment in new areas or hone their skills. It is an informal and friendly group of like minded participants who are encouraging of each other's achievements.

Time: 9.30-12.30 Wednesday mornings. Please feel free to call me on 0421 409 069 or to contact me at debaran@bigpond.com



Logan Artists Association Inc

PO Box 378 Browns Plains Qld 4118 ABN 82 342 259 288

All enquiries 0421 874 225 www.loganartists.com

Art + Friendship

CALENDAR OF EVENTS

February – April 2012

REGULAR CLASSES / SOCIAL GROUPS IN ART & POTTERY STUDIOS

REGULAR CLASSES IN ART STUDIO					
Mon	Tue	Wed	Thu	Fri	Sat
Oils with Brian 9:30-12:30pm (30 Jan 2012)	Social Art Group 9:30-2pm	Art Class with Deb 9:30-12:30pm	Art class with Suzanne 9:30-12:30pm Evening Art with Terry 6-8pm (fortnight)	Art class with Mako 9:30-12:30pm	
REGULAR CLASSES IN POTTERY STUDIO					
Mon	Tue	Wed	Thu	Fri	Sat
Pottery class with Ray 12:30-3:30pm			Social Pottery Group 9:30-12:30pm		

SPECIAL WORKSHOPS AND EVENTS:

February 2012		
Sat 4/2	10am-12noon	LAA Members meeting – Guest Speaker is Ray Outeridge
Sat 18/2	9:30-12:30pm	Seascapes Workshop with Brian Cook
Sat 25/2	9am-2pm	Book sale at Logan Central Library Bookshop
Sat 25/2	1pm-4pm	Creating Raku clay pieces for LAA Raku firing day
March 2012		
Sat 3/3	10am-12noon	LAA Members meeting
Thur 15/3	2pm-6pm	Polymer Clay Workshop with Christi Friesen (International Artist)
Sat 24/3	9:30-12:30pm	Heliotropic Workshop with Deb Wright
Sat 31/3	10am-4pm	LAA Raku firing day
April 2012		
Sat 14/4	10am-12noon	LAA Members meeting Guest Speaker is Margaret Kirman
Sat 14/4	1pm-4pm	Ink, Pen and Wash Workshop Module 2 with Deb Wright

All activities are subject to change.

Minimum numbers required for workshops to proceed - if interested, please register as early as possible.

To confirm details and make bookings, phone Rob on 0421 874 225 or Di on 3341 4204

SEE WEBSITE FOR MORE DETAILS www.loganartists.com